



[www.korenix.com](http://www.korenix.com)

FL. 2, No. 188, Bao-ciao Rd,  
Shing Tien City, Taipei, Taiwan  
**Tel: +886-2-8911-1000**  
**Fax: +886-2-2912-3338**

# Korenix NMS Getting Started Guide

## Introduction

Korenix NMS is Industrial Innovation Network Management system (i<sup>2</sup>-NMS). So Korenix NMS is also called i<sup>2</sup>-NMS for short. It is specifically designed for the mission critical industrial environments. The Korenix NMS provides a comprehensive platform for monitoring, configuring, and maintaining mission-critical IP-based communication networks, such as IP surveillance, factory automations, mining, substations, maritime, and military applications.

## System Requirements

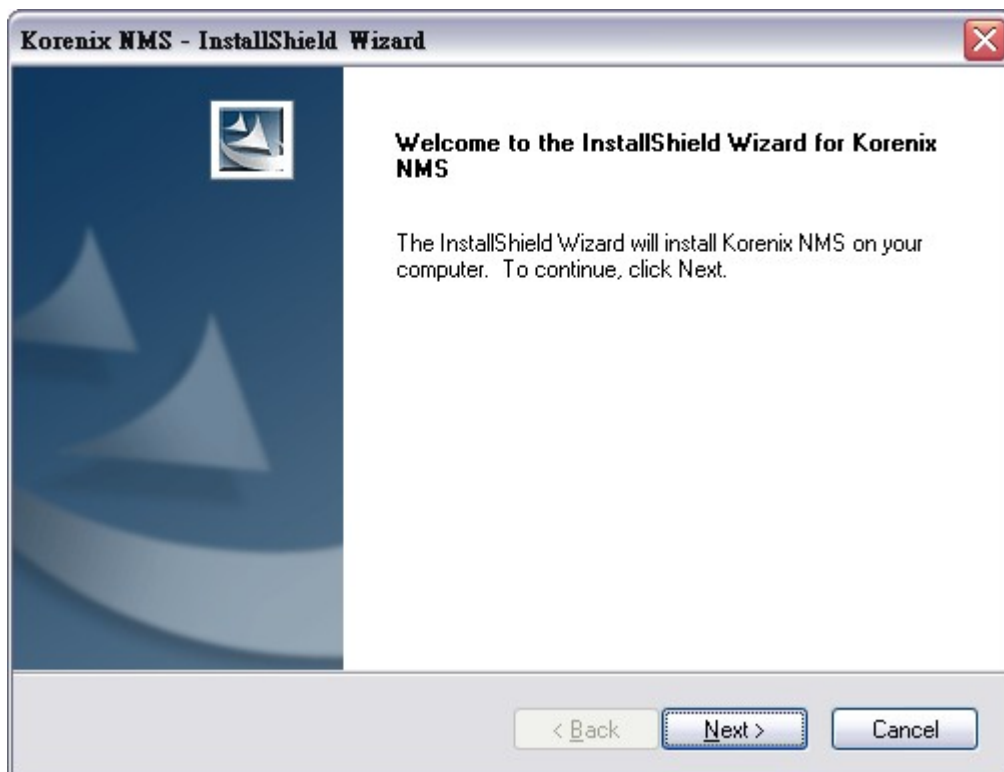
- Hardware
  - Processor  
Minimum Intel Core 2 Duo CPU 2.5 GHz or higher
  - RAM  
1GB RAM
  - Disk  
1GB hard disk
  
- Software
  - Operation system  
Windows XP/2000/2003/7/Vista platforms
  
- Screen Resolution  
It is optimized for a screen resolution of 1024x768.

## Installation

1. Run setup.exe.



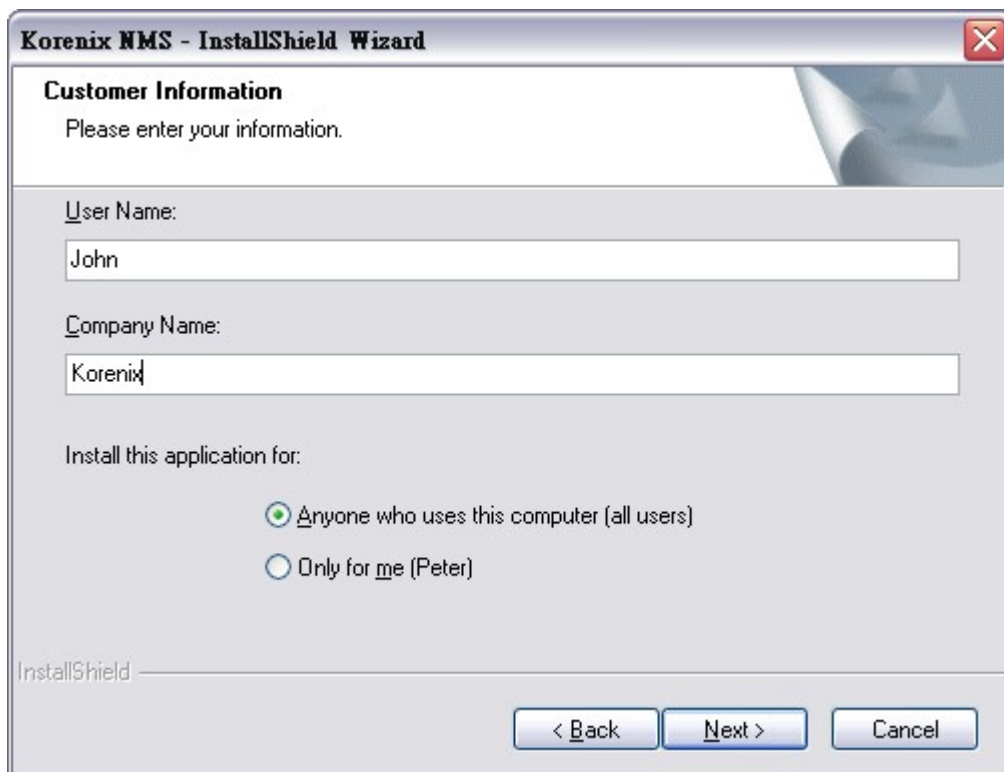
2. Press **Next** to next screen.



3. Please read the license agreement and select "I accept the terms of the license agreement. Press **Next** to next screen.

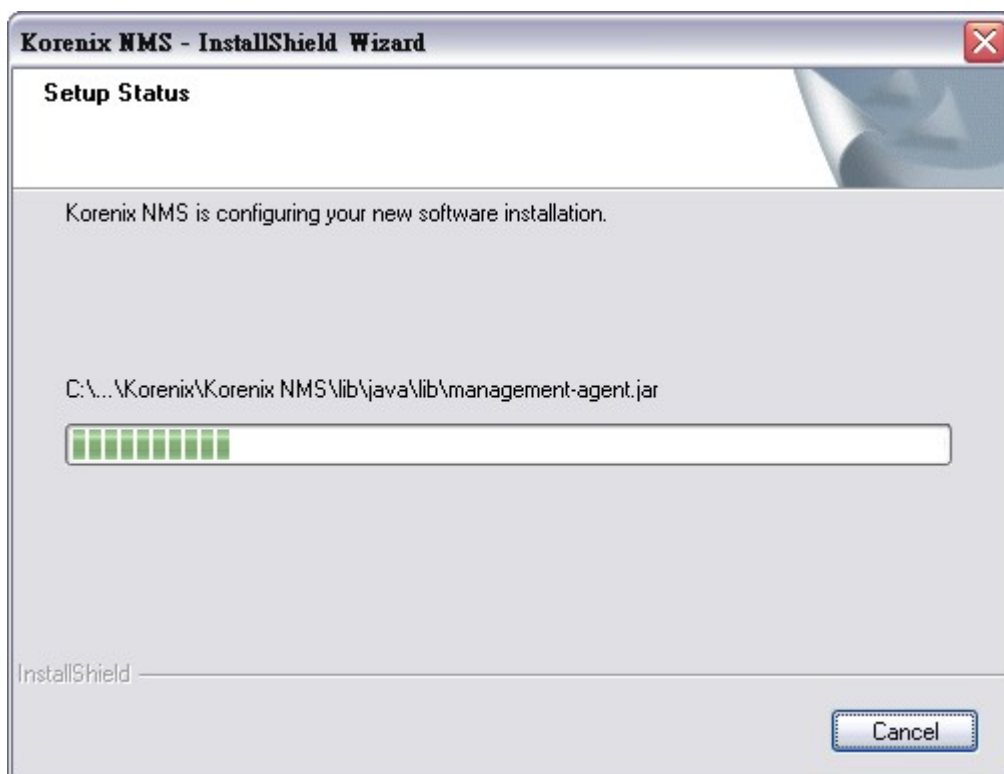
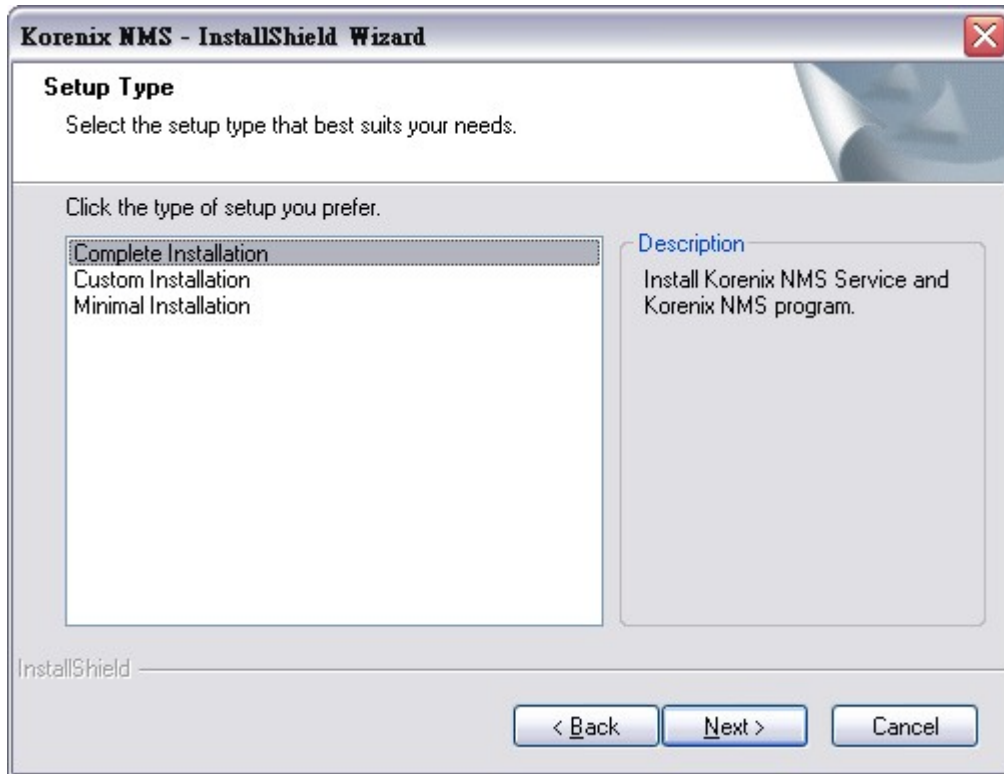


4. Input User Name and Company Name and Press **Next** to next screen.

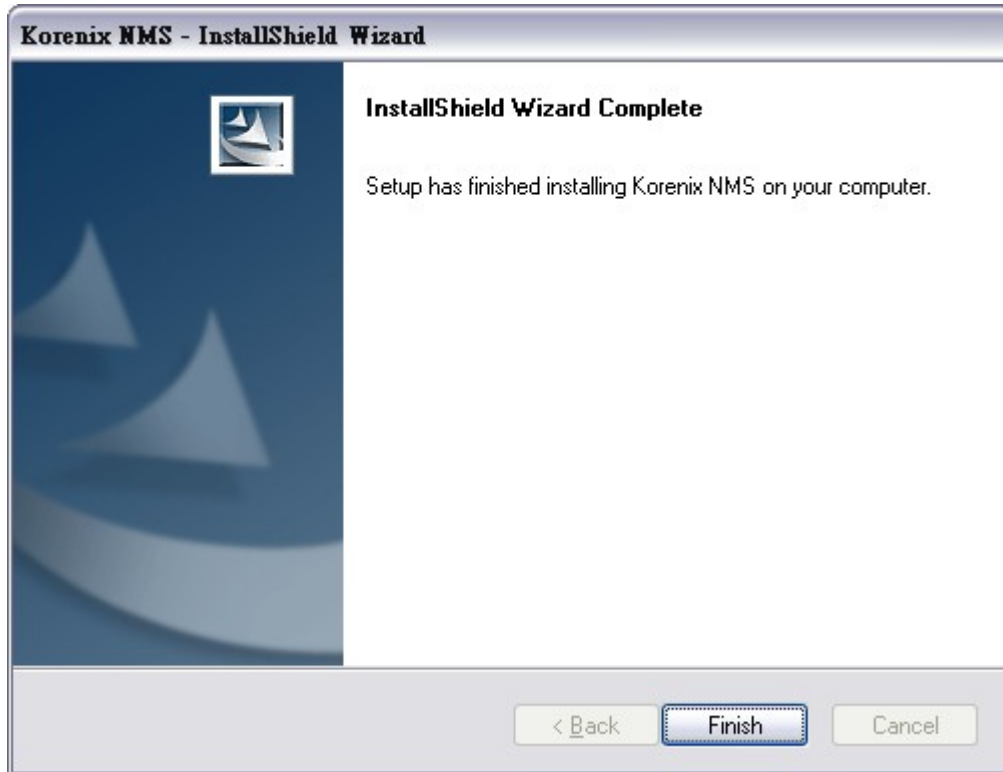


5. Select the type of setup and press **Next** to next screen.

**Note: Minimal installation (Korenix NMS program) cannot run standalone without complete installation (Korenix NMS Service and Korenix NMS program).**



6. Press Finish to end installation.



On the desktop or in **Start / Programs / Korenix / Korenix NMS /**, there are two program shortcuts (as figure).



This shortcut is for local host connection.



This shortcut will be asked to connect to remote server.

## Getting Started

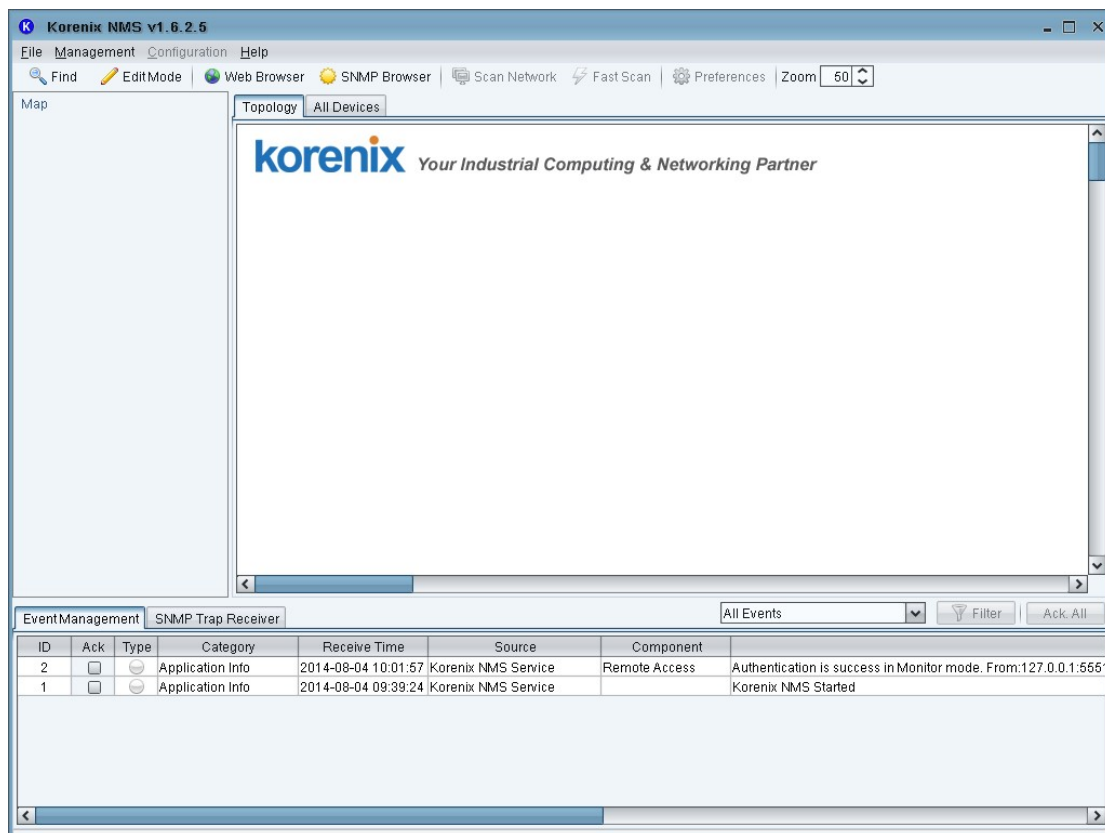
Korenix NMS is a client/server based network system. One Korenix NMS server can serve many remote Korenix NMS clients (maximum is 5) <sup>1</sup>.

---

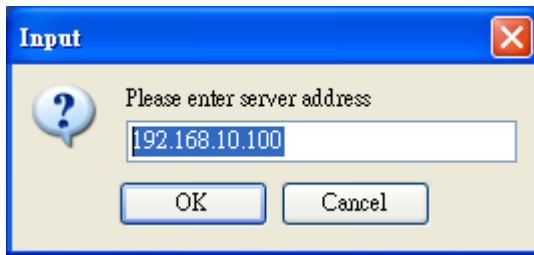
<sup>1</sup> Only one remote client connection per computer. The server will refuse the new connection if there is already one session exist.

Because of the access synchronization, we only allow one client entered the **Edit** mode at the same time and the other clients on **Monitor** mode. The default password to enter the two modes is “korenix”. The Monitor mode can only allow viewer to browse the topology. The Edit mode can use all functions.

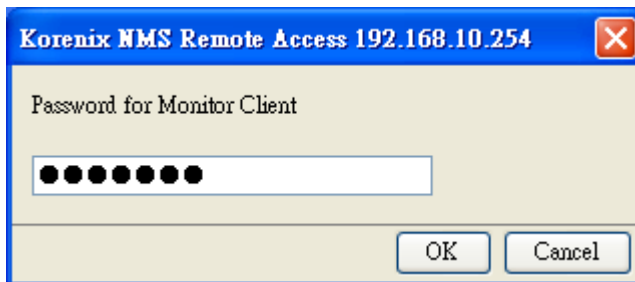
- Start Korenix NMS server on Server site
  1. **Start / Programs / Korenix / Korenix NMS / Korenix NMS (localhost)**
  2. Display Korenix NMS Main Window.



- (Optional) Start Korenix NMS client on Client site
  1. **Start / Programs / Korenix / Korenix NMS / Korenix NMS**
  2. Enter server address to connect. (ex. Server IP: 192.168.10.100)

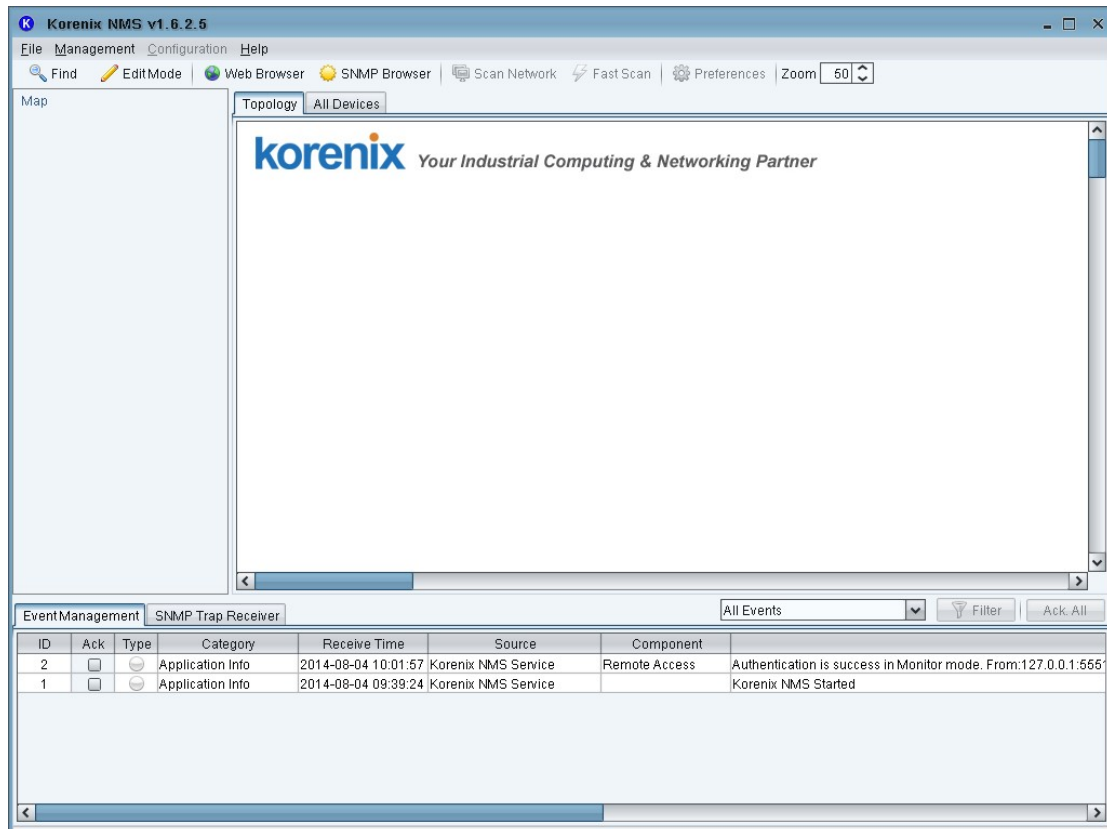


3. Enter password into monitor mode and press “Ok”.



Note: the default password for Monitor Mode access is “korenix”.

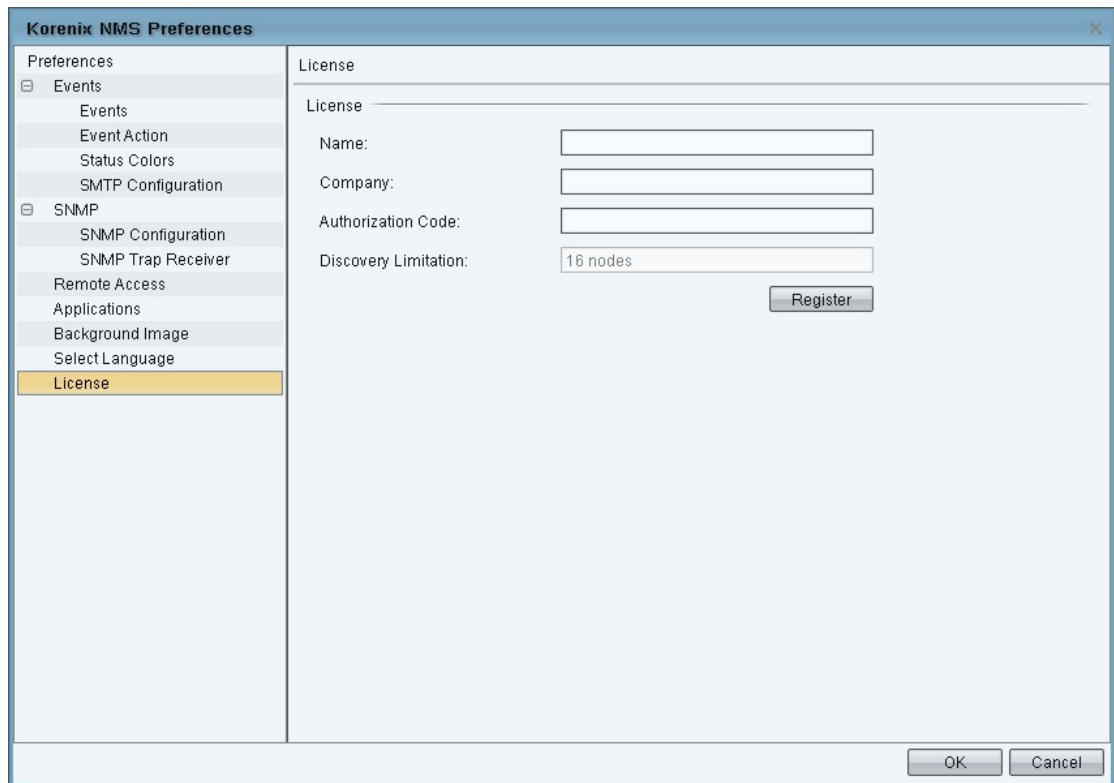
4. Display Korenix NMS Main Window.



■ Register for 32/64/128/256/512/1024 nodes



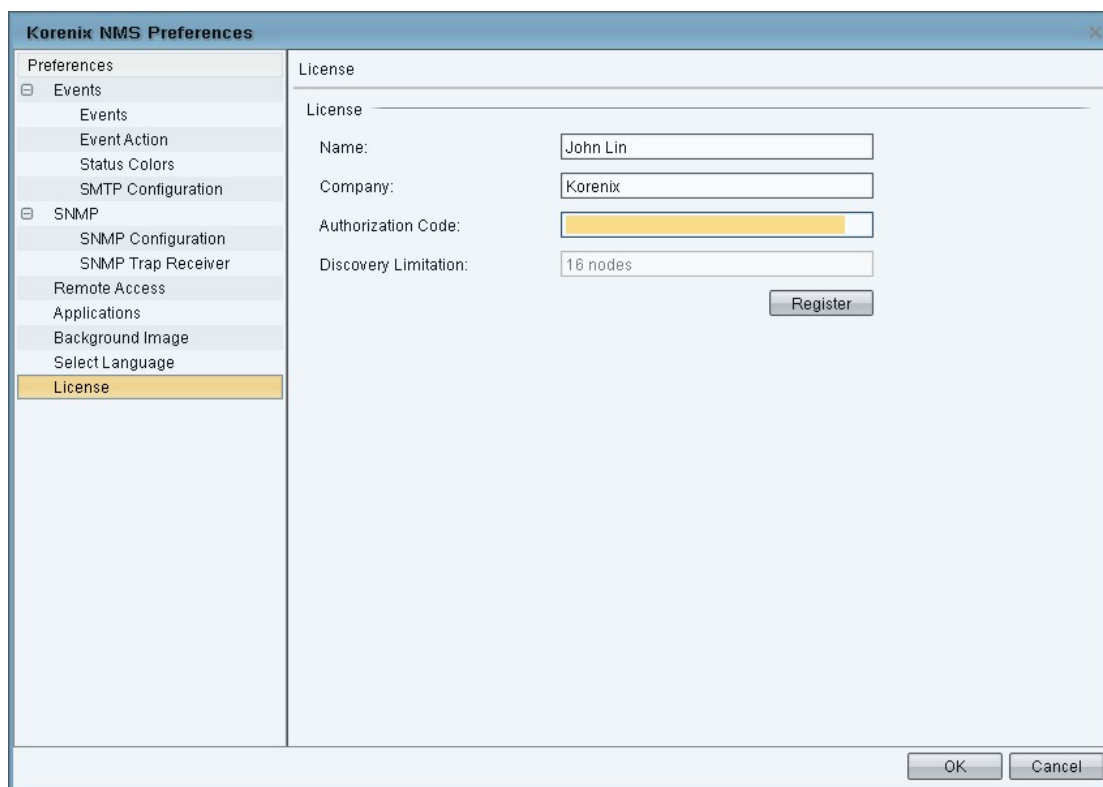
1. Download and install the latest Korenix NMS from Korenix web site.  
(<http://www.korenix.com/support-jetview-software.htm>)
2. After receiving the Korenix NMS license, go to Korenix NMS > Preference > License.



The screenshot shows the 'Korenix NMS Preferences' dialog box with the 'License' tab selected. The left sidebar contains a tree view with the following items: Preferences, Events (expanded), Events, Event Action, Status Colors, SMTP Configuration, SNMP (expanded), SNMP Configuration, SNMP Trap Receiver, Remote Access, Applications, Background Image, Select Language, and License (highlighted). The main area of the dialog is titled 'License' and contains the following fields and buttons:

- Name:
- Company:
- Authorization Code:
- Discovery Limitation:
- Register button
- OK button
- Cancel button

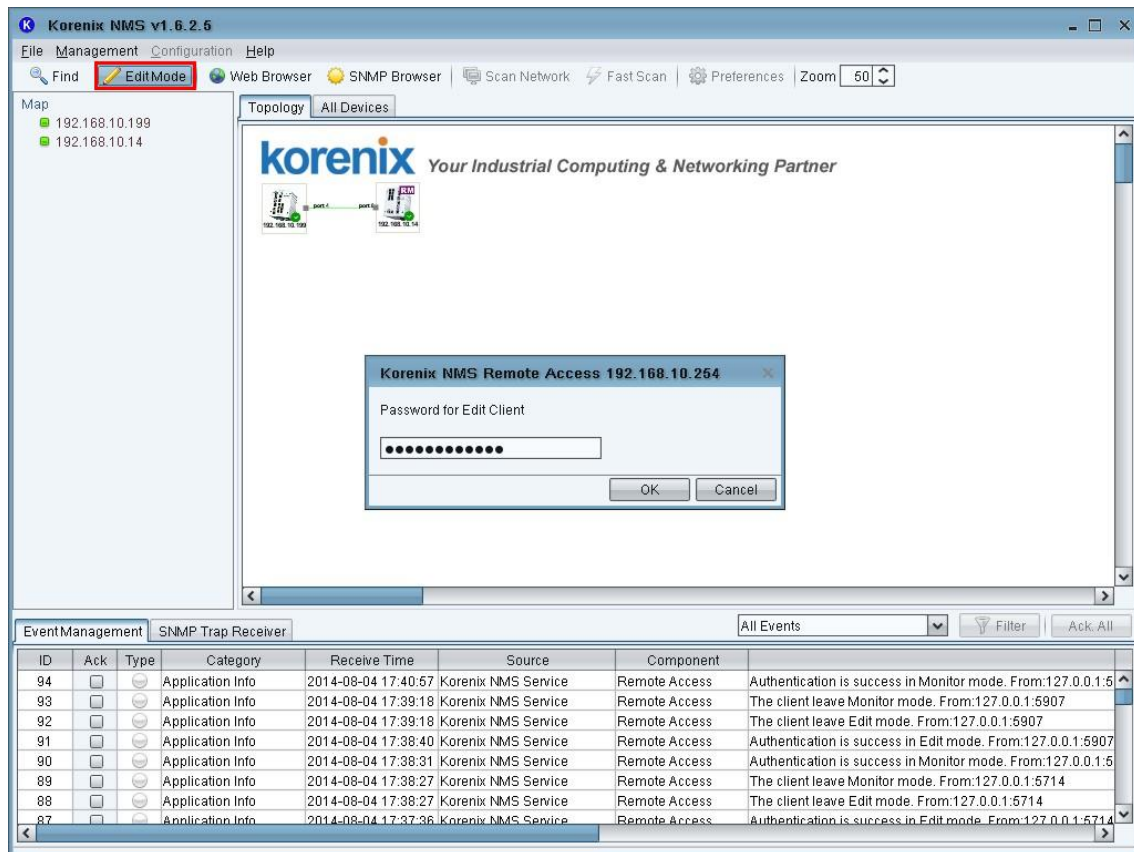
3. Fill out Name, Company and Authorization Code base on the content of Korenix NMS license. And then press Register button.



4. Finally, press OK to apply license.

■ Enter Edit mode

1. Click on Edit Mode on the toolbar, it displays Password dialog.



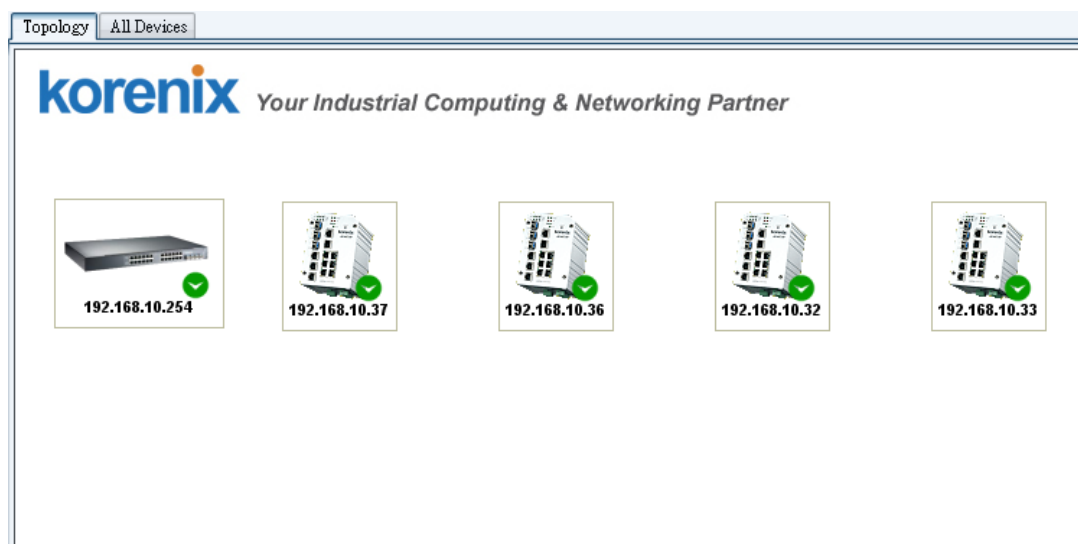
2. Input password **korenix** and press OK.

3. After entering Edit Mode, the button will become green.



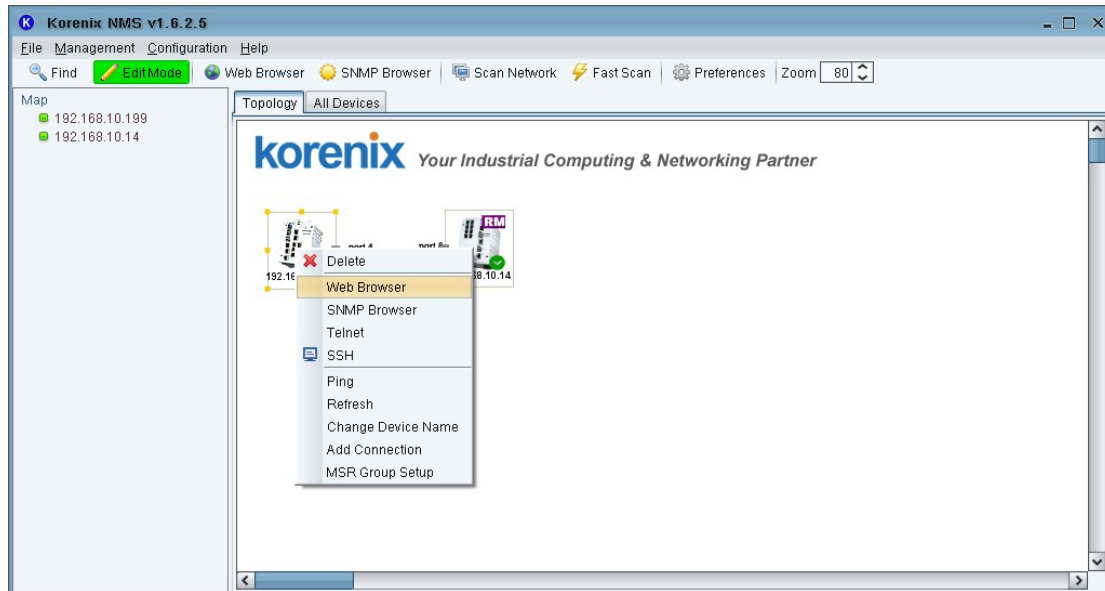
■ Fast scan (add devices)

To update installed network components (or devices), click on Fast Scan on the toolbar and select one of your NIC which connect to devices. It displays all Korenix devices in the network on the **Topology** tab.



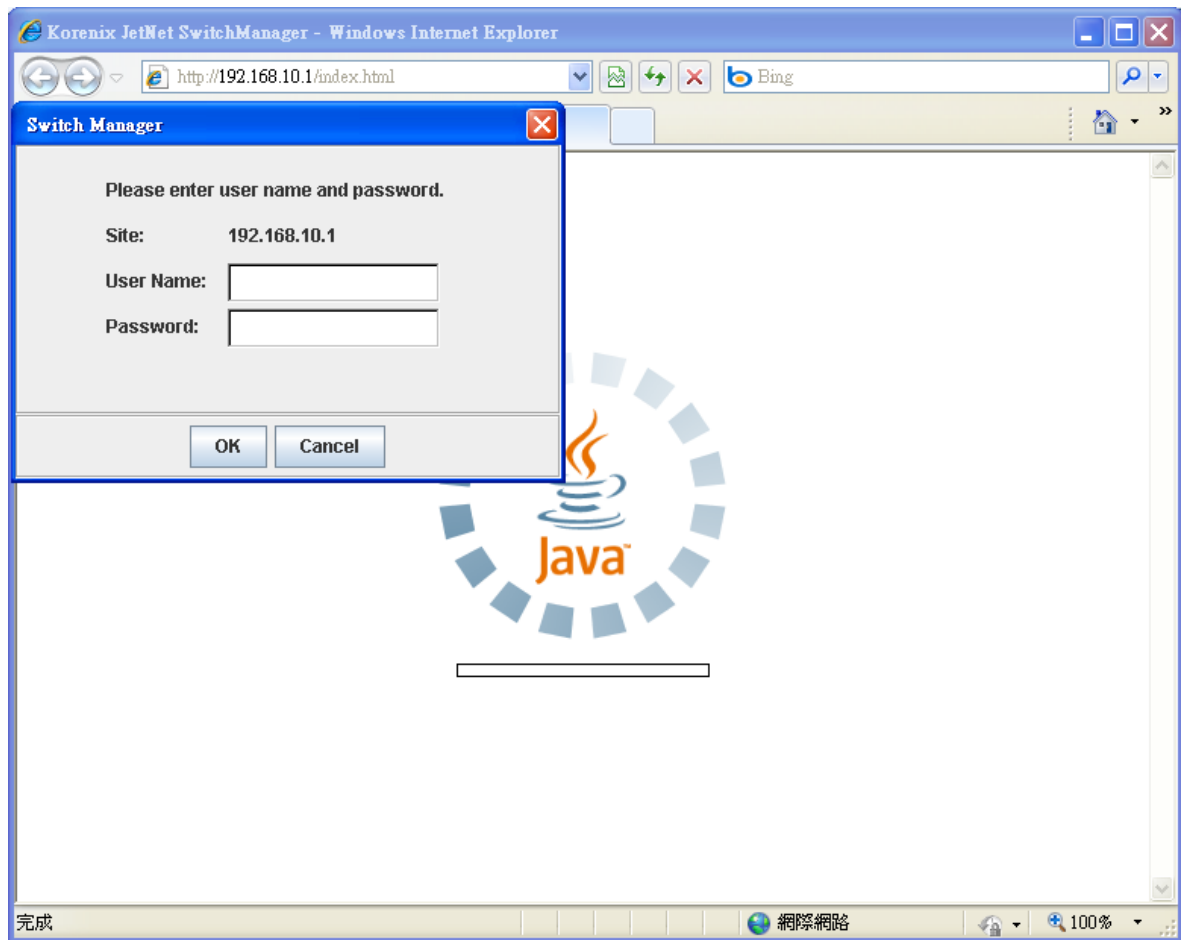
## ■ Auto Topology

1. To let "Auto Topology" working, each network device (i.e. JetNet5010G) MUST enable LLDP function. Enter Web screen to confirm whether LLDP is enabled.
  - a. Use mouse to select one device on the Topology tab which you want to enable LLDP.
  - b. Mouse right-click the selected device and click on the **Web Browser** menu-item of pop-up menu.



- c. When the login screen appears, login with the user name and password.

**Note: The default login User Name and Password: admin/admin**



d. Click on the tree node **Topology Discovery**.

- Basic Setting
- Port Configuration
- Network Redundancy
- VLAN
- Traffic Prioritization
- Multicast Filtering
- SNMP
- Security
- Warning
- Monitor and Diag
  - MAC Address Table
  - Port Statistics
  - Port Mirroring
  - Event Log
  - Topology Discovery
  - Ping
- Device Front Panel
- Save
- Logout

LLDP

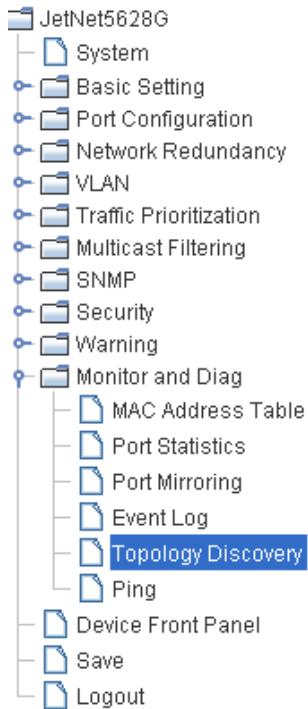
### LLDP Configuration

LLDP timer	<input type="text"/>
LLDP hold time	<input type="text"/>

### LLDP Port State

Local Port	Neighbor ID	Neighbor IP	Neighbor VID

- e. Confirm whether LLDP is enabled. If Disable, please set Enable and press **Apply**. You manual set the timers of LLDP. The range of LLDP timer is 5~254 and LLDP hold time is 10~255.



## Topology Discovery


LLDP

### LLDP Configuration

LLDP timer	30
LLDP hold time	120

### LLDP Port State

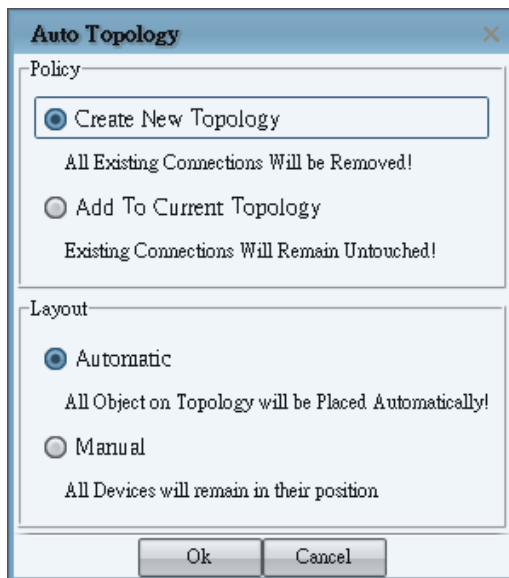
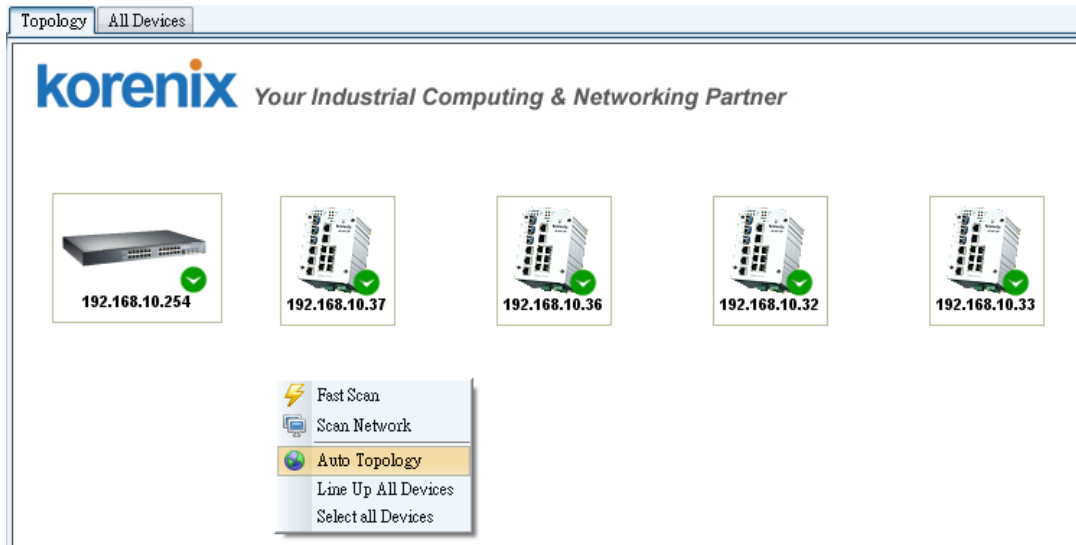
Local Port	Neighbor ID	Neighbor IP	Neighbor VID
fa9	00:12:77:ff:02:c3	192.168.10.10	1
fa13	00:12:77:60:14:60	192.168.10.20	1

2. Check every device's icon that each one has a green check  on it. Device icon without check icon can't access by SNMP<sup>2</sup>.
3. Generate connections between the devices<sup>3</sup>.
4. Mouse right-click on the Topology tab and click on **Auto Topology** on pop-up menu. It will display as follows:

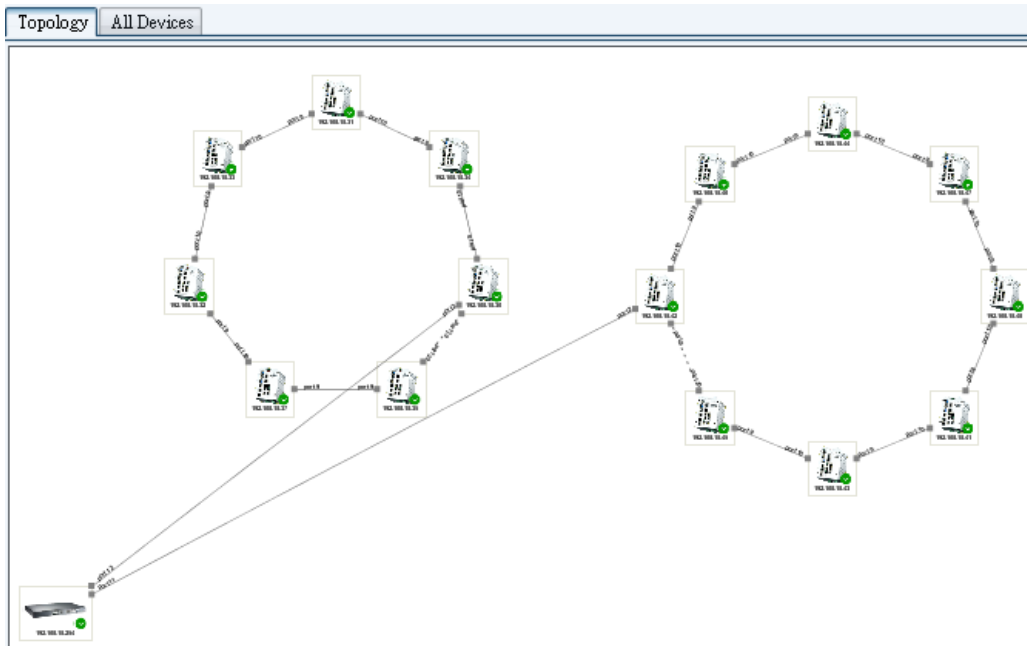
<sup>2</sup> You may need to wait 0.5 minute to let Korenix NMS collect devices' information.

<sup>3</sup> In the example below, Korenix NMS add connections and place all devices according to the SNMP mib.





- a. Press OK to display the following of screen:



**Auto Topology Check List:**

Yes/No	Requirement
	Does every device enable SNMP?
	Does any device not using default SNMP community? (public, private)
	Does every devices' icon show green?
	Does every device enable LLDP?
	If the device show red (not reachable), after you fix the problem, did you refresh the device?